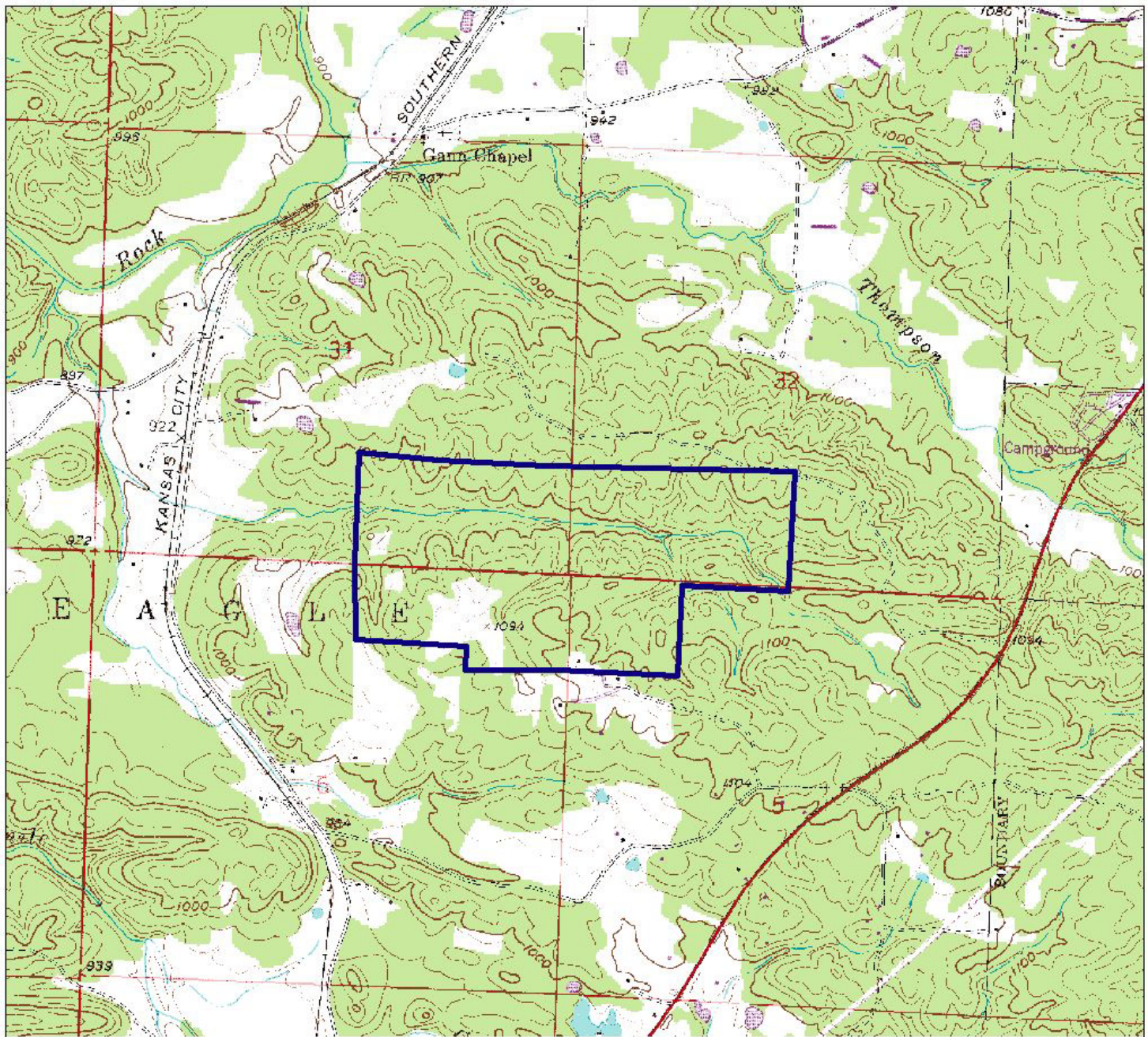


9/22/2005

Arkansas Natural Heritage Commission
Department of Arkansas Heritage
System of Natural Areas
Approximate Natural Area Boundaries



0.5 0 0.5 1 1.5 2 Miles

Iron Mountain Natural Area

County: Polk

Date Added To System: 1979

Acreage: 260.51

USGS Topographic Quadrangle: Potter 7.5

Township/Range: T02S/R31W
T03S/R31W

Section(s): 31, 32
5, 6

Contour Interval: 20 feet

Directions: From Mena, travel approximately 7.1 miles southwest on U.S. Highway 71 through and beyond Potter Junction. Turn right on County Road 168 and travel 0.2 mile to fork. Turn right on County Road 169 and travel 0.3 mile to parking area on your right.